

# Pixellated NaI(Tl) For Enhanced Performance

Pixellated sodium iodide arrays can be used with position-sensitive photomultiplier tubes to produce small field of view and organ-specific detectors with excellent performance and maximum active area.

The proprietary process developed by Saint-Gobain Crystals ensures superior light output and improved pixel-to-pixel uniformity. The reflector material used between the pixels by SGC provides outstanding reflection as well as excellent protection against optical crosstalk. We have produced arrays up to 15 cm by 20 cm in size and with pixels as small as one mm square with minimal spacing (as low as 0,2 mm) required between the pixels. Longer pixels, up to 30 mm, have also been produced for PET applications. Other sizes and scintillator materials are available to meet specific applications.

## Design Considerations -

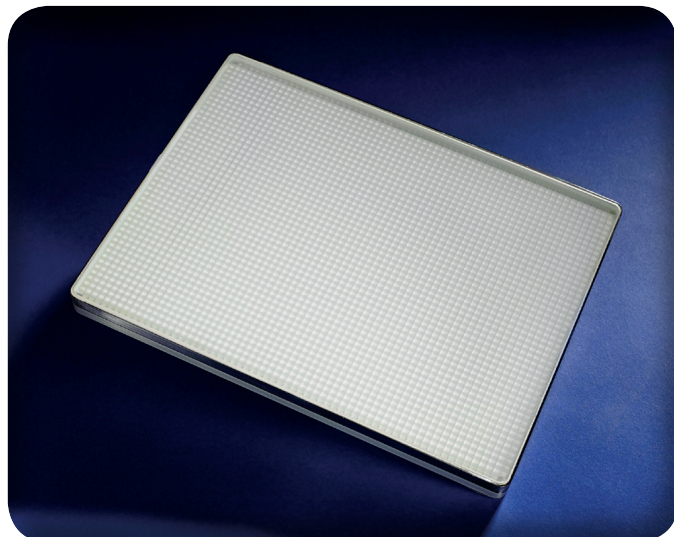
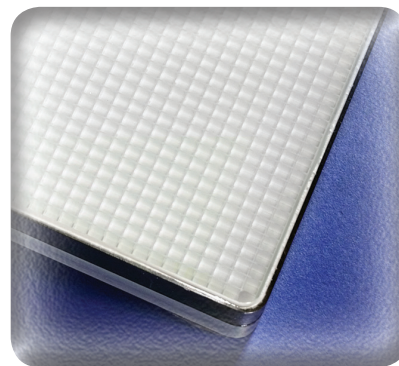
Pixellated sodium iodide arrays are designed to particular OEM requirements. All dimensions, including array length and width and pixel size and length, may be defined by the application.

## Benefits -

- Exceptional light output
- Minimal pixel separation
- Excellent pixel-to-pixel uniformity
- Reduced optical crosstalk
- Minimal dead space at array edges

## Applications -

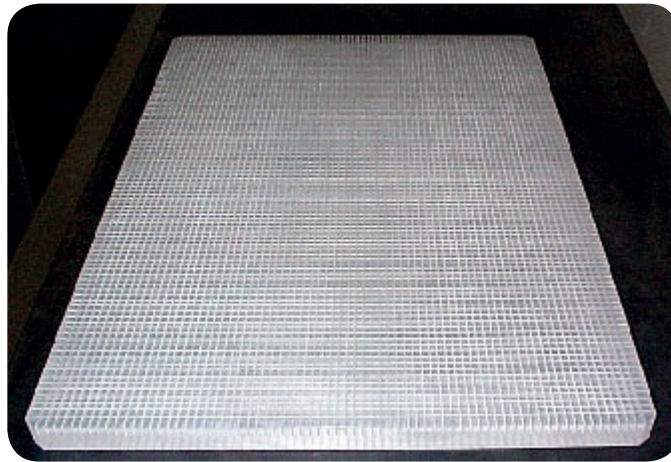
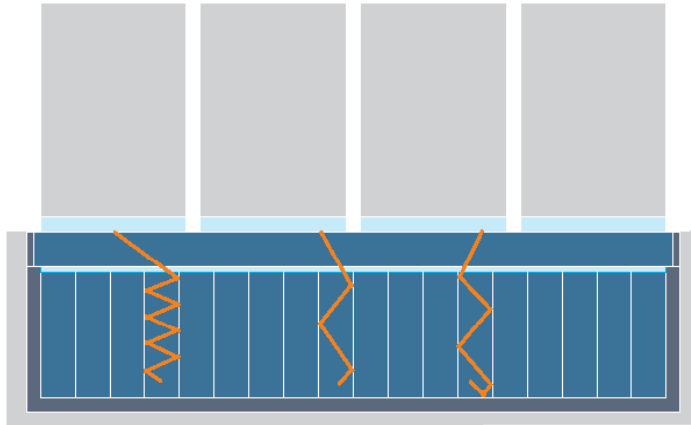
- Dedicated organ imaging
- PET imaging
- Scintimammography
- Small animal imaging
- Hand-held imagers



# Pixellated NaI(Tl) For Enhanced Performance

## Performance -

Pixellation of the crystal results in improved spatial resolution due to decreased light spread; Saint-Gobain's proprietary improved reflection method maintains high light output.



Saint-Gobain Crystals

[www.crystals.saint-gobain.com](http://www.crystals.saint-gobain.com)

*Manufacturer reserves the right to alter specifications.*

*©2001-2016 Saint-Gobain Ceramics & Plastics, Inc. All rights reserved.*

(08-16)