

4

3

2

NOTES: UNLESS OTHERWISE SPECIFIED

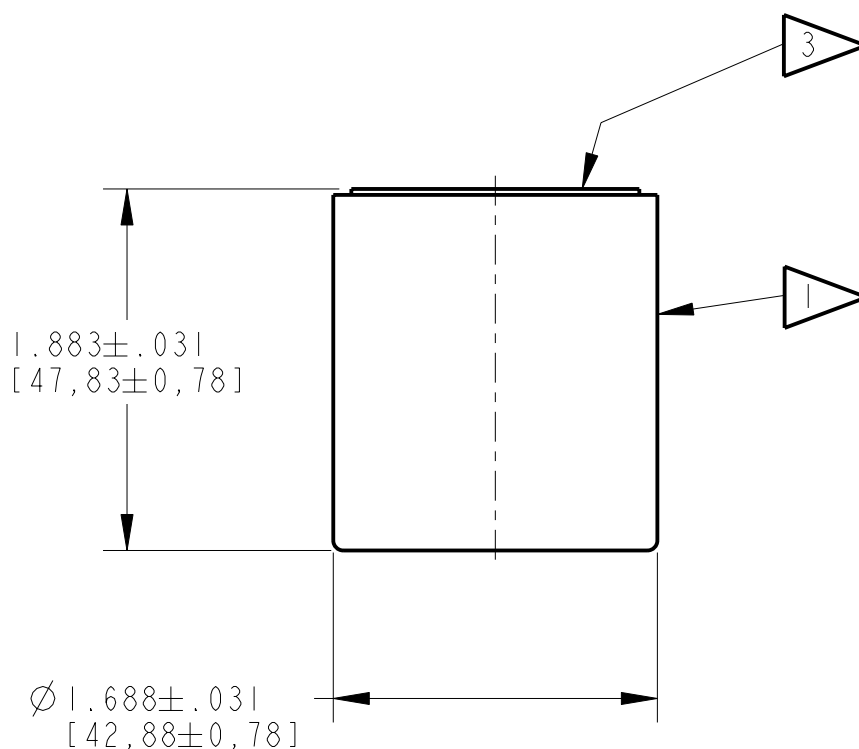
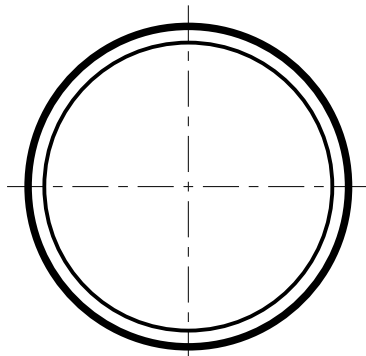
REVISIONS				
ZONE	REV.	DESCRIPTION	DATE	APPROVED
-	-	-	-	-

1. ALUMINUM CRYSTAL HOUSING
 .020 [0,508] THK.
 (CLEAR ANODIZED FINISH)

2. NAI(TL) CRYSTAL
 Ø1.500 [38,11] X 1.500 [38,11] LG.

3. K+ GLASS OPTICAL WINDOW
 .250 [6,35] THK.

4. PERFORMANCE SPECIFICATION:
 PHR: 8.5% OR BETTER FOR Cs-137



CUSTOMER APPROVAL

APPROVED

APPROVED AS NOTED

REVISED & RESUBMIT

CUST. INIT. _____

DATE _____

ENGINEERING SALES DRAWING

DO NOT SCALE THIS DRAWING
 THIS DWG IS IN ACCORDANCE WITH ASME Y-14.5M

DRAWN L. SCHULTZ 11-Nov-02

THIS DOCUMENT IS APPROVED AND MAINTAINED UNDER ELECTRONIC CONFIGURATION CONTROL

SAINT-GOBAIN
 CRYSTALS & DETECTORS
 12345 Kinsman Rd. Newbury, OH 44065

TITLE MODEL: 1.5R1.5

SIZE	CAGE CODE	DWG. NO.	REV.
B		S600-3241	-
SCALE	WEIGHT	CALC.	ACT. SHEET
1.000		<input type="checkbox"/>	<input type="checkbox"/> 1 OF 1

THIS PRINT IS THE EXCLUSIVE PROPERTY OF SAINT-GOBAIN CRYSTALS & DETECTORS, A SUBSIDIARY OF SAINT-GOBAIN CERAMICS & PLASTICS, INC. AND IS NOT TO BE FURTHER REPRODUCED OR DISCLOSED TO ANOTHER PARTY WITHOUT PRIOR WRITTEN PERMISSION FROM SAINT-GOBAIN CRYSTALS & DETECTORS. COPYRIGHT RESERVED, SAINT-GOBAIN CERAMICS & PLASTICS, INC. 2002

4

3

2

1