

4

3

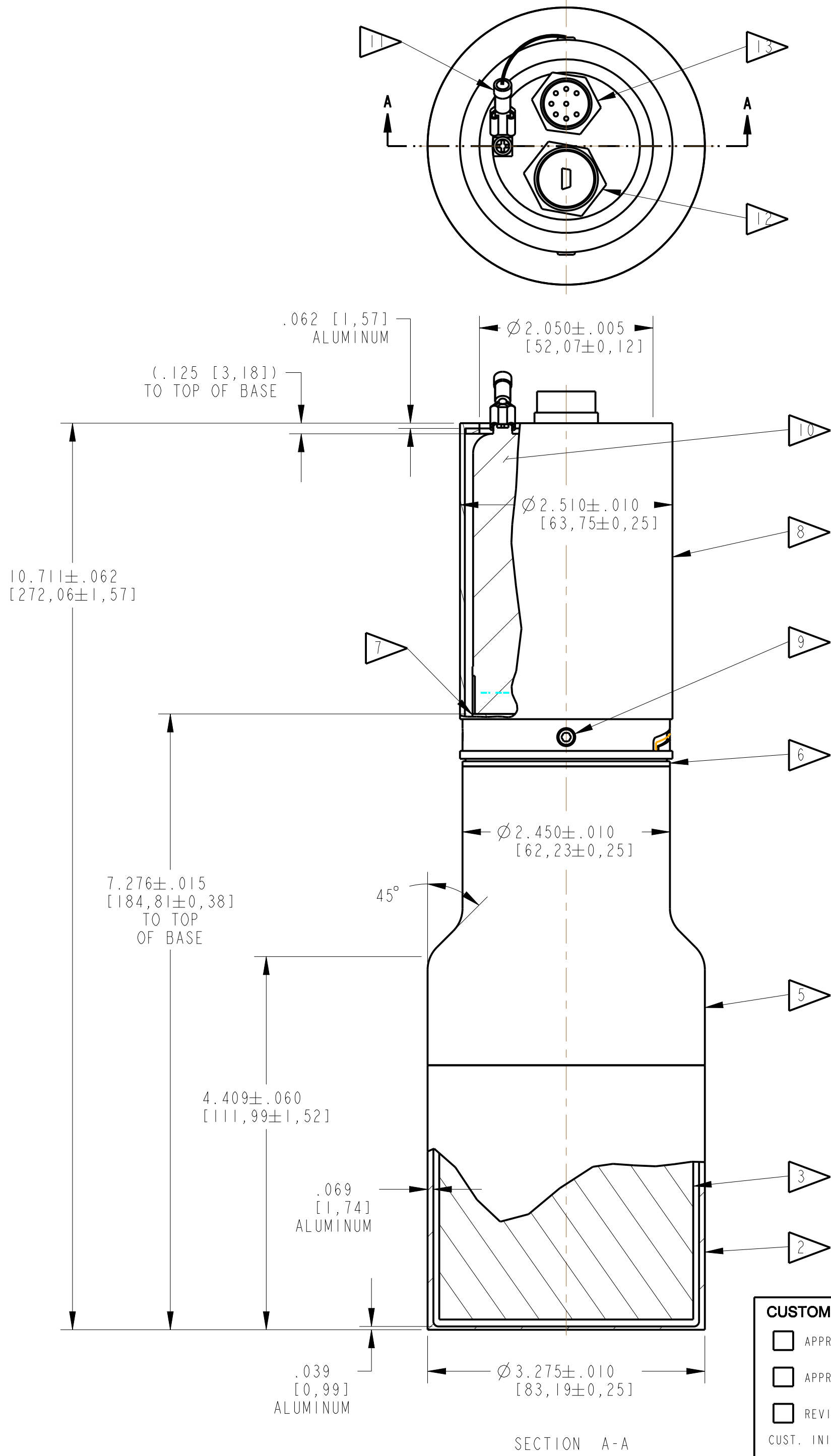
2

1

NOTES:

- 1. IN [MM]
- 2. ALUMINUM CRYSTAL HOUSING (CLEAR ALODINE FINISH)
- 3. NAI(TL) CRYSTAL Ø3.000 [76,2] X 3.000 [76,2] THK.
- 4. Ø3.000 [76,2] PHOTOMULTIPLIER TUBE HAMAMATSU R6233-01, WIRED FOR NEGATIVE HIGH VOLTAGE OPERATION
- 5. MU-METAL LIGHT SHIELD .025 [0,635] THK. (BARE METAL FINISH)
- 6. STAINLESS STEEL ADAPTER (BARE METAL FINISH)
- 7. 14 PIN BASE
- 8. SLOTTED ALUMINUM EXTENSION, REMOVABLE (CLEAR ALODINE FINISH)
- 9. #4-40 BUTTON HEAD SCREW (2) PLACES
- 10. MCA BASE FOR USE WITH HPK R623X PMT, -HV, 120 MHz, USB SG P/N S600-7889
- 11. EXTERNAL GROUND STRAP ASSEMBLY 6.500 [165,1] LONG
- 12. MINI B USB BULGIN, PX0446 IP68, THREAD LOCK
- 13. EIGHT POSITION THREAD LOCK CONNECTOR SWITCHCRAFT, EN3P8M EN3 MINI WEATHERTIGHT
- 14. PERFORMANCE SPECIFICATION:
 PHR: 7% OR BETTER FOR Cs-137 END-ON
 HIGH VOLTAGE: -800V TYPICAL

REVISIONS				
ZONE	REV.	DESCRIPTION	DATE	APPROVED
B4	E	EXTERNAL GROUND STRAP ASSEMBLY WAS EXTERNAL GROUND LUG	10/20/15	IND. #2766



TOLERANCES UNLESS OTHERWISE SPECIFIED
 .X ±.100
 .XX ±.010
 .XXX ±.005
 ANGLES ±0° 30'
 MICRO FINISH 125 ✓

CUSTOMER APPROVAL

APPROVED
 APPROVED AS NOTED
 REVISED & RESUBMIT

CUST. INIT. _____
 DATE _____

ENGINEERING SALES DRAWING

DO NOT SCALE THIS DRAWING
 THIS DWG IS IN ACCORDANCE WITH ASME1 Y-14.5M

DRAWN L. MARKS Oct-14-13

THIS DOCUMENT IS APPROVED AND MAINTAINED UNDER ELECTRONIC CONFIGURATION CONTROL

SAINT-GOBAIN
 17900 Great Lakes Parkway, Hiram, OH 44234

TITLE MODEL: 3M3/3-MCA-X

SIZE	CAGE CODE	DWG. NO.	REV.
C		S600-7983	E
SCALE	WEIGHT	CALC.	ACT.
0.875		<input type="checkbox"/>	<input type="checkbox"/>

SHEET 1 OF 1

THIS PRINT IS THE EXCLUSIVE AND CONFIDENTIAL PROPERTY OF SAINT-GOBAIN CRYSTALS, A SUBSIDIARY OF SAINT-GOBAIN CERAMICS & PLASTICS, INC. AND IS NOT TO BE FURTHER REPRODUCED OR DISCLOSED TO ANOTHER PARTY WITHOUT PRIOR WRITTEN PERMISSION FROM SAINT-GOBAIN CRYSTALS. COPYRIGHT RESERVED, SAINT-GOBAIN CERAMICS & PLASTICS, INC. 2015

4

3

2

1