

4

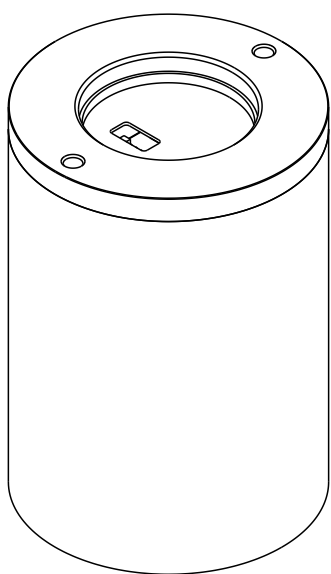
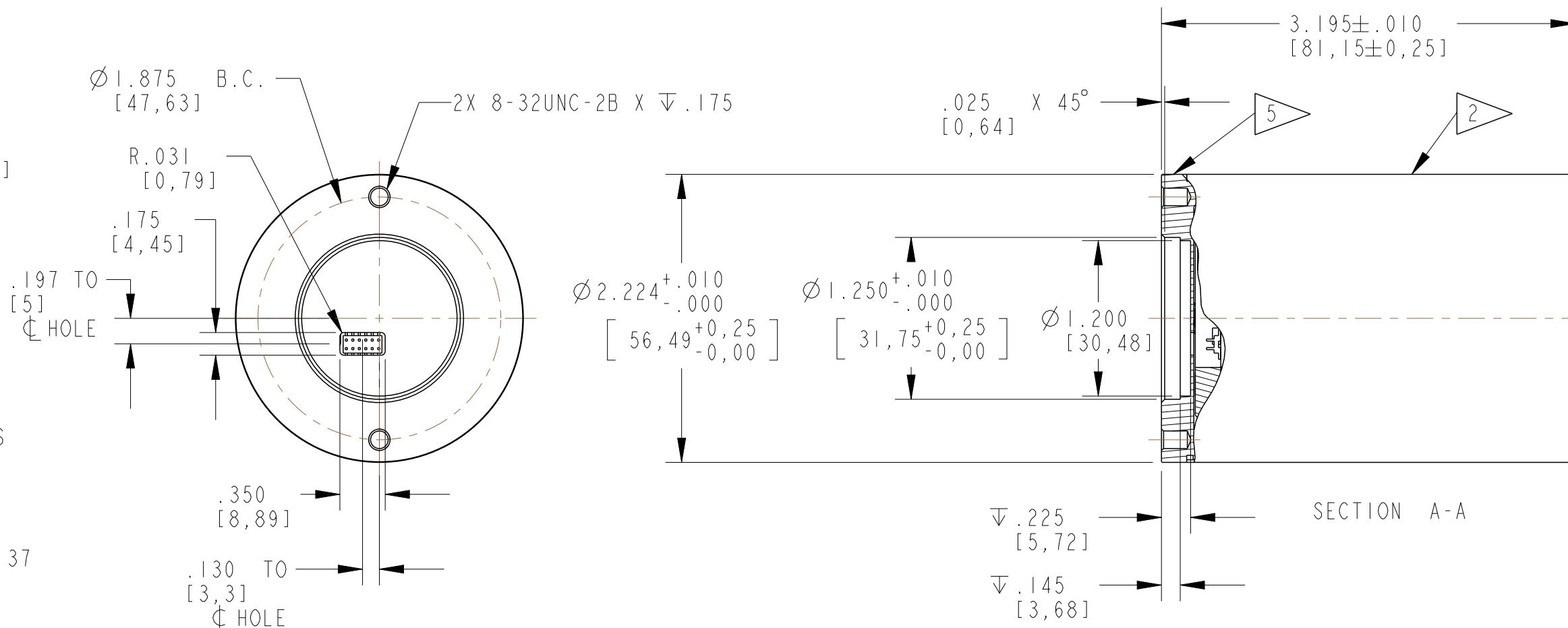
3

2

NOTES:

1. IN [MM]
2. ALUMINUM CRYSTAL HOUSING  
.020 [9,508] THK.  
(CLEAR ALODINE FINISH)
3. NAIL CRYSTAL  
Ø2.000 [50,8] X 2.000 [50,8]
4. K+ GLASS OPTICAL WINDOW  
.250 [6,35] THK.
5. ALUMINUM TOP CAP  
(CLEAR ALODINE FINISH)
6. SEE MAN-690-001 FOR PIN-OUTS  
& SPECIFICATIONS
7. PERFORMANCE SPECIFICATION:  
PHR: SEE TABLE FOR CS-137  
END-ON RESOLUTION

REVISIONS				
ZONE	REV.	DESCRIPTION	DATE	APPROVED
ZONE 4	B	ADDED NOTES	5/8/19	IND. #3027



SCALE 3:4

3	690-1081-16-00	Si50.8NL50.8D75	≤	7.5%
2	690-1081-12-00	Si50.8NL50.8D85	≤	8.5%
1	690-1081-04-00	Si50.8NL50.8D95	≤	9.5%
LINE	ASSEMBLY NO.	TITLE		PHR

CUSTOMER APPROVAL

APPROVED

APPROVED AS NOTED

REVISED & RESUBMIT

CUST. INIT. \_\_\_\_\_

DATE \_\_\_\_\_

**ENGINEERING SALES DRAWING**

DO NOT SCALE THIS DRAWING  
THIS DWG IS IN ACCORDANCE  
WITH ASME Y-14.5M

DRAWN L. MARKS Oct-05-18

THIS DOCUMENT IS APPROVED  
AND MAINTAINED UNDER  
ELECTRONIC CONFIGURATION  
CONTROL

**SAINT-GOBAIN**  
17900 Great Lakes Parkway, Hiram, OH 44234

TITLE  
Si50.8NL50.8D(XX)  
SEE TABLE

SIZE	CAGE CODE	DWG. NO.	REV.
<b>B</b>		S690-1081-XX-00	B
SCALE	WEIGHT	CALC.	ACT.
1:1		<input type="checkbox"/>	<input type="checkbox"/>

SHEET 1 OF 1

**THIS PRINT IS THE EXCLUSIVE AND CONFIDENTIAL PROPERTY OF SAINT-GOBAIN CRYSTALS, A SUBSIDIARY OF SAINT-GOBAIN CERAMICS & PLASTICS, INC. AND IS NOT TO BE FURTHER REPRODUCED OR DISCLOSED TO ANOTHER PARTY WITHOUT PRIOR WRITTEN PERMISSION FROM SAINT-GOBAIN CRYSTALS. COPYRIGHT RESERVED, SAINT-GOBAIN CERAMICS & PLASTICS, INC. 2019**

4

3

2

1