

4

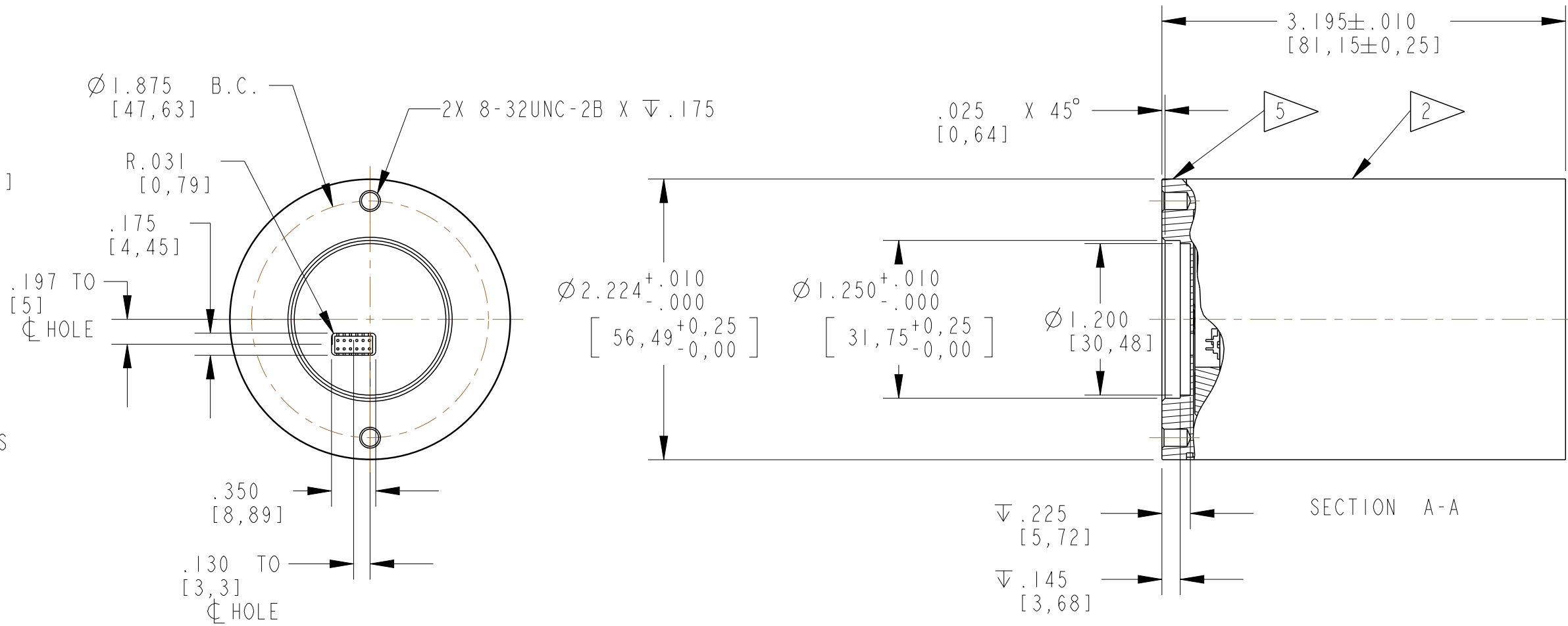
3

2

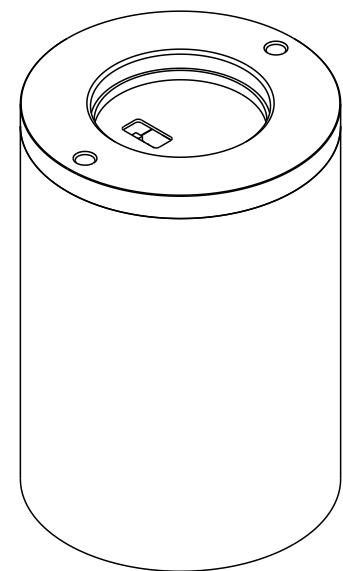
NOTES:

1. IN [MM]
2. ALUMINUM CRYSTAL HOUSING
.020 [9,508] THK.
(CLEAR ALODINE FINISH)
3. NAI(TL) CRYSTAL
Ø2.000 [50,8] X 2.000 [50,8]
4. K+ GLASS OPTICAL WINDOW
.250 [6,35] THK.
5. ALUMINUM TOP CAP
(CLEAR ALODINE FINISH)
6. SEE MAN-690-001 FOR PIN-OUTS
& SPECIFICATIONS
7. PERFORMANCE SPECIFICATION:
PHR: SEE TABLE FOR CS-137
END-ON RESOLUTION

REVISIONS				
ZONE	REV.	DESCRIPTION	DATE	APPROVED
ZONE 4	A	ADDED NOTES	5/8/19	IND. #3027



3	690-1100-16-00	Si50.8Ni50.8D75	≤ 7.5%
2	690-1100-12-00	Si50.8Ni50.8D85	≤ 8.5%
1	690-1100-04-00	Si50.8Ni50.8D95	≤ 9.5%
LINE	ASSEMBLY NO.	TITLE	PHR



SCALE 3:4

METRIC TOLERANCES UNLESS OTHERWISE SPECIFIED	US STANDARD TOLERANCES UNLESS OTHERWISE SPECIFIED
X ±2.5mm	.X ±.100 in.
X.X ±.25mm	.XX ±.010 in.
X.XX ±.13mm	.XXX ±.005 in.
ANGLES ±0° 30'	ANGLES ±0° 30'
MICRO FINISH 3.18 μm	MICRO FINISH 125 μinches

CUSTOMER APPROVAL

APPROVED

APPROVED AS NOTED

REVISED & RESUBMIT

CUST. INIT. _____

DATE _____

ENGINEERING SALES DRAWING

DO NOT SCALE THIS DRAWING
THIS DWG IS IN ACCORDANCE
WITH ASME Y-14.5M

DRAWN L. MARKS Jan-14-19

THIS DOCUMENT IS APPROVED
AND MAINTAINED UNDER
ELECTRONIC CONFIGURATION
CONTROL

SAINT-GOBAIN
17900 Great Lakes Parkway, Hiram, OH 44234

TITLE
Si50.8Ni50.8D(XX)
(SEE TABLE)

SIZE	CAGE CODE	DWG. NO.	REV.
B		S690-1100-XX-00	A
SCALE	WEIGHT	CALC.	ACT.
1:1		<input type="checkbox"/>	<input type="checkbox"/>

SHEET 1 OF 1

THIS PRINT IS THE EXCLUSIVE AND CONFIDENTIAL PROPERTY OF SAINT-GOBAIN CRYSTALS, A SUBSIDIARY OF SAINT-GOBAIN CERAMICS & PLASTICS, INC. AND IS NOT TO BE FURTHER REPRODUCED OR DISCLOSED TO ANOTHER PARTY WITHOUT PRIOR WRITTEN PERMISSION FROM SAINT-GOBAIN CRYSTALS. COPYRIGHT RESERVED, SAINT-GOBAIN CERAMICS & PLASTICS, INC. 2019

4

3

2

1