

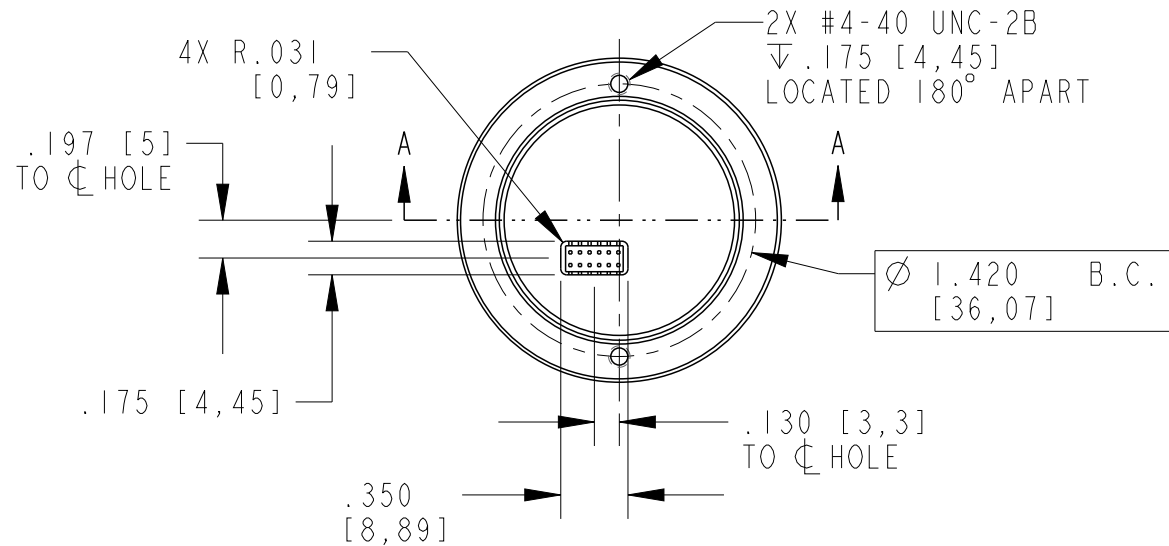
4

3

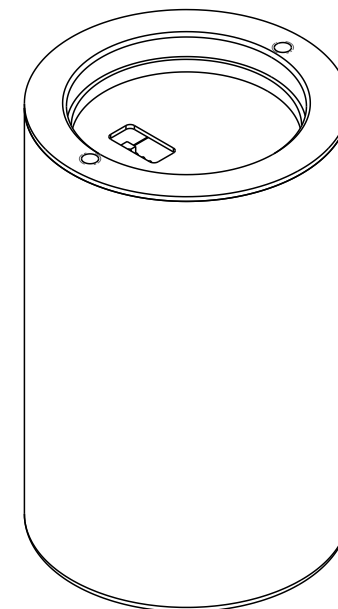
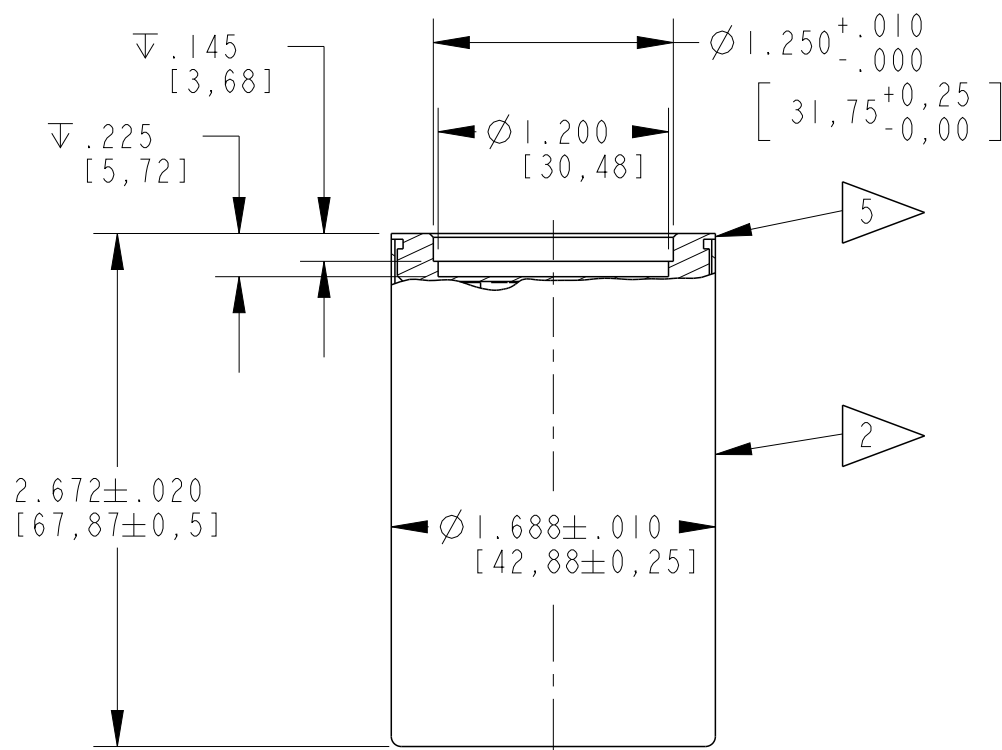
2

NOTES:

1. IN [MM]
2. ALUMINUM CRYSTAL HOUSING
.020 [9,508] THK.
(CLEAR ALODINE FINISH)
3. NAI(TL) CRYSTAL
Ø 1.500 [38,11] X 1.500 [38,11]
4. K+ GLASS OPTICAL WINDOW
.250 [6,35] THK.
5. ALUMINUM TOP CAP
(CLEAR ALODINE FINISH)
6. SEE MAN-690-001 FOR PIN-OUTS
& SPECIFICATIONS
7. PERFORMANCE SPECIFICATION:
PHR: 8% OR BETTER FOR CS-137 END-ON



REVISIONS				
ZONE	REV.	DESCRIPTION	DATE	APPROVED
D4	A	CORRECTED CRYSTAL MATERIAL	6/13/19	IND. #3033



ISOMETRIC VIEW

SECTION A-A

METRIC TOLERANCES UNLESS OTHERWISE SPECIFIED

X	\pm 2.5mm
X.X	\pm .25mm
X.XX	\pm .13mm
ANGLES	\pm 0° 30'
MICRO FINISH	3.18 μ m

US STANDARD TOLERANCES UNLESS OTHERWISE SPECIFIED

.X	\pm .100 in.
.XX	\pm .010 in.
.XXX	\pm .005 in.
ANGLES	\pm 0° 30'
MICRO FINISH	125 μ inches

CUSTOMER APPROVAL

APPROVED

APPROVED AS NOTED

REVISED & RESUBMIT

CUST. INIT. _____

DATE _____

ENGINEERING SALES DRAWING

DO NOT SCALE THIS DRAWING
 THIS DWG IS IN ACCORDANCE WITH ASME Y-14.5M

DRAWN L. MARKS Apr-25-19

THIS DOCUMENT IS APPROVED AND MAINTAINED UNDER ELECTRONIC CONFIGURATION CONTROL



17900 Great Lakes Parkway, Hiram, OH 44234

TITLE			
MODEL: Si38.INI38.ID80			
SIZE	CAGE CODE	DWG. NO.	REV.
B		S690-1113	A
SCALE	WEIGHT	CALC. ACT.	SHEET
1:1		<input type="checkbox"/> <input type="checkbox"/>	1 OF 1

THIS PRINT IS THE EXCLUSIVE AND CONFIDENTIAL PROPERTY OF SAINT-GOBAIN CRYSTALS, A SUBSIDIARY OF SAINT-GOBAIN CERAMICS & PLASTICS, INC. AND IS NOT TO BE FURTHER REPRODUCED OR DISCLOSED TO ANOTHER PARTY WITHOUT PRIOR WRITTEN PERMISSION FROM SAINT-GOBAIN CRYSTALS. COPYRIGHT RESERVED, SAINT-GOBAIN CERAMICS & PLASTICS, INC. 2019

4

3

2

1