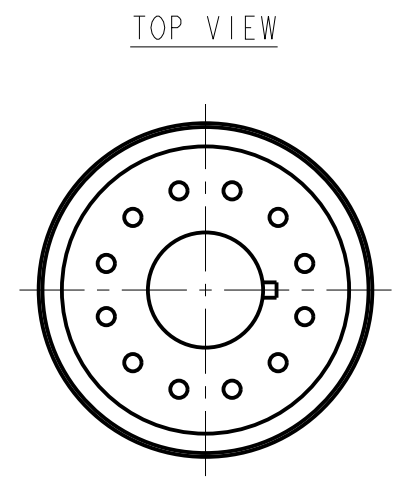
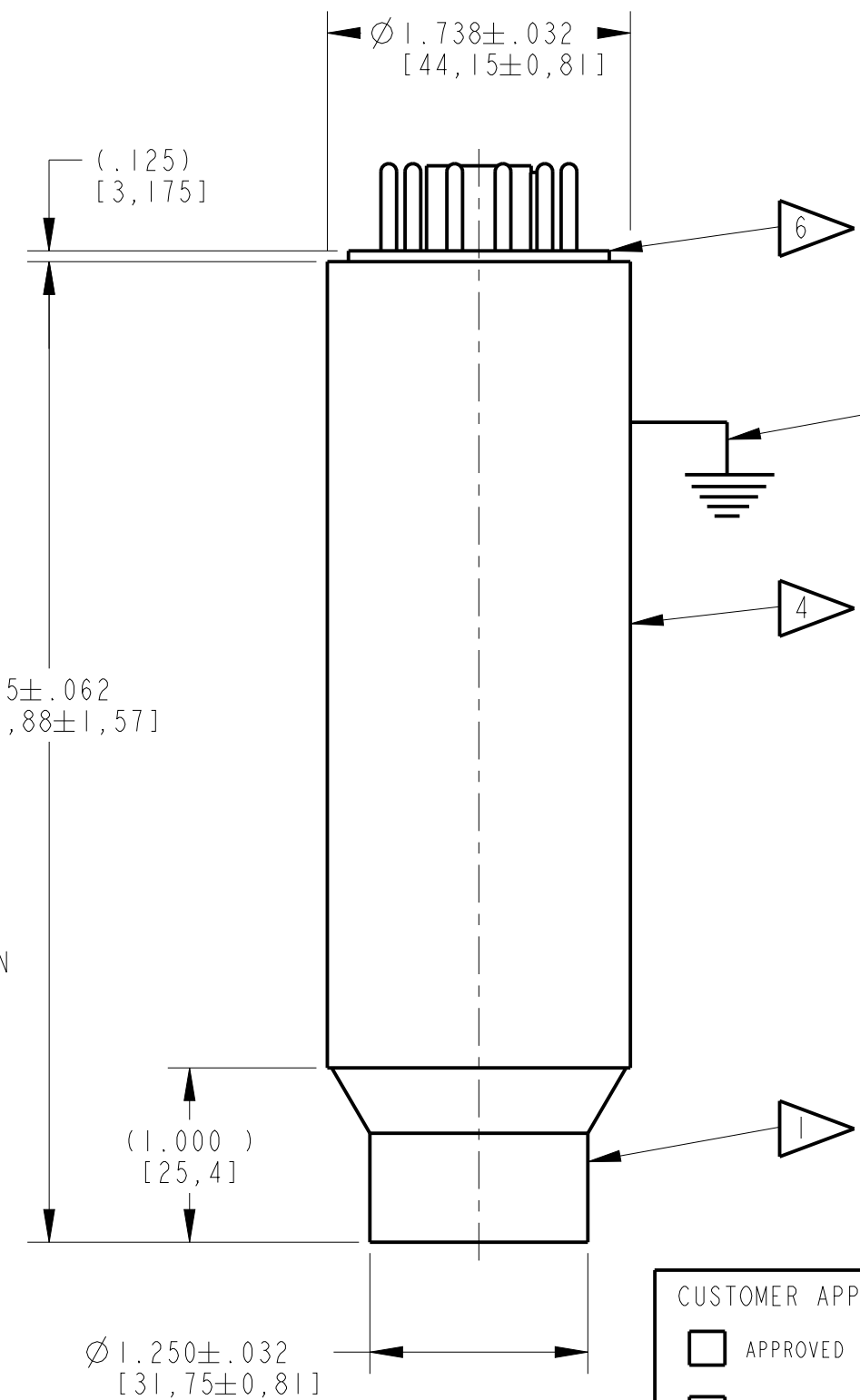


REVISIONS				
ZONE	REV.	DESCRIPTION	DATE	APPROVED
C2, C4 A1	D	ADDED INTERNAL GROUND MODEL: IMI/1.5-X WAS IMI/1.5	3/22/16	IND. #2796

NOTES: UNLESS OTHERWISE SPECIFIED

1. ALUMINUM CRYSTAL HOUSING  
.020 [0,508] THK.  
(CLEAR ALODINE FINISH)
2. NAI(TL) CRYSTAL  
Ø1.000 [25,4] X 1.000 [25,4] THK.
3. Ø1.500 [38,1]  
PHOTOMULTIPLIER TUBE  
HAMAMATSU R980, R11102 OR EQUIV.
4. MU-METAL LIGHT SHIELD  
.020 [0,508] THK.  
(BARE METAL FINISH)
5. CATHODE (PIN #12) INTERNALLY  
GROUNDED TO MU-METAL LIGHT  
SHIELD
6. 12 PIN BASE
7. PERFORMANCE SPECIFICATION:  
PHR: 8.5% OR BETTER FOR Cs-137 END-ON  
HIGH VOLTAGE: +700V TYPICAL



CUSTOMER APPROVAL

APPROVED

APPROVED AS NOTED

REVISED & RESUBMIT

CUST. INIT. \_\_\_\_\_

DATE \_\_\_\_\_

**ENGINEERING SALES DRAWING**

DO NOT SCALE THIS DRAWING  
THIS DWG IS IN ACCORDANCE  
WITH ASME Y-14.5M

DRAWN H. S. 28-JUN-71

THIS DOCUMENT IS APPROVED  
AND MAINTAINED UNDER  
ELECTRONIC CONFIGURATION  
CONTROL

**SAINT-GOBAIN**  
17900 Great Lakes Parkway, Hiram, OH 44234

TITLE  
MODEL: IMI/1.5-X

SIZE	CAGE CODE	DWG. NO.	REV.
B		SA-01160	D
SCALE	WEIGHT	CALC. ACT. SHEET	
1:1		<input type="checkbox"/> <input type="checkbox"/>	1 OF 1

**THIS PRINT IS THE EXCLUSIVE AND CONFIDENTIAL PROPERTY OF SAINT-GOBAIN CRYSTALS, A SUBSIDIARY OF SAINT-GOBAIN CERAMICS & PLASTICS, INC. AND IS NOT TO BE FURTHER REPRODUCED OR DISCLOSED TO ANOTHER PARTY WITHOUT PRIOR WRITTEN PERMISSION FROM SAINT-GOBAIN CRYSTALS. COPYRIGHT RESERVED, SAINT-GOBAIN CERAMICS & PLASTICS, INC. 2015**