

4

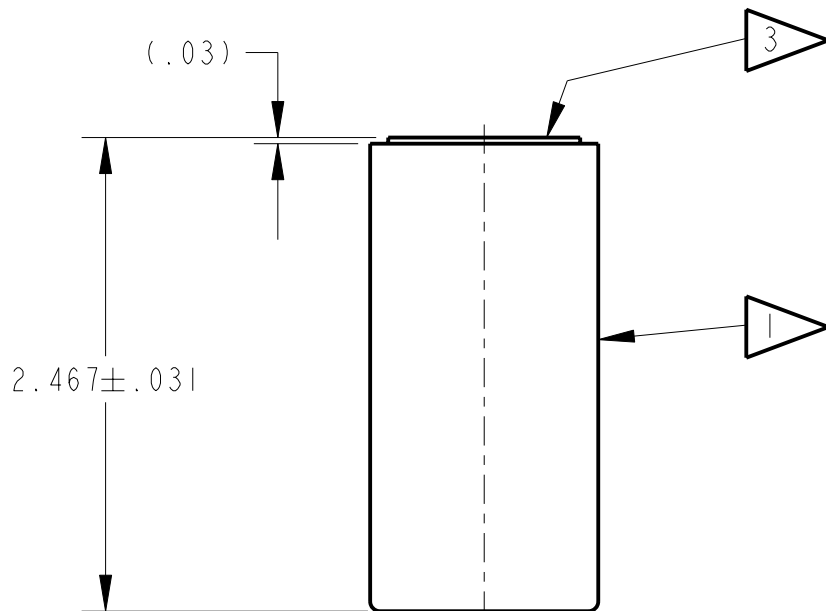
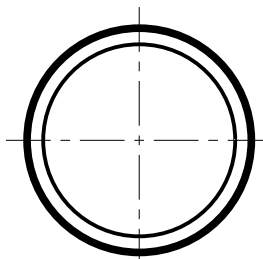
3

2

NOTES:

- 1. ALUMINUM CRYSTAL HOUSING
.020 [0,508] THK.
(BRIGHT CHROME FINISH)
- 2. NAI(TL) CRYSTAL
Ø1.000 [25,4] X 2.000 [50,8] THK.
- 3. K+ GLASS OPTICAL WINDOW
.250 [6,35] THK.
- 4. PERFORMANCE SPECIFICATION:
PHR: 8.5% OR BETTER FOR Cs-137

REVISIONS				
ZONE	REV.	DESCRIPTION	DATE	APPROVED
-	A	REVISED, UPDATED AND REDRAWN	4/13/04	IND. #901



<p>CUSTOMER APPROVAL</p> <input type="checkbox"/> APPROVED <input type="checkbox"/> APPROVED AS NOTED <input type="checkbox"/> REVISED & RESUBMIT CUST. INIT. _____ DATE _____	ENGINEERING SALES DRAWING		 SAINT-GOBAIN CRYSTALS 12345 Kinsman Rd. Newbury, OH 44065			
	DO NOT SCALE THIS DRAWING THIS DWG IS IN ACCORDANCE WITH ASME Y-14.5M		TITLE MODEL: IR2			
	DRAWN L. SCHULTZ	13-Apr-04	SIZE B	CAGE CODE	DWG. NO. SA-01667	REV. A
THIS DOCUMENT IS APPROVED AND MAINTAINED UNDER ELECTRONIC CONFIGURATION CONTROL			SCALE 1:1	WEIGHT	CALC. ACT. SHEET <input type="checkbox"/> <input type="checkbox"/> 1 OF 1	

THIS PRINT IS THE EXCLUSIVE PROPERTY OF SAINT-GOBAIN CRYSTALS & DETECTORS, A SUBSIDIARY OF SAINT-GOBAIN CERAMICS & PLASTICS, INC. AND IS NOT TO BE FURTHER REPRODUCED OR DISCLOSED TO ANOTHER PARTY WITHOUT PRIOR WRITTEN PERMISSION FROM SAINT-GOBAIN CRYSTALS. COPYRIGHT RESERVED, SAINT-GOBAIN CERAMICS & PLASTICS, INC. 2004

4

3

2

1