

4

3

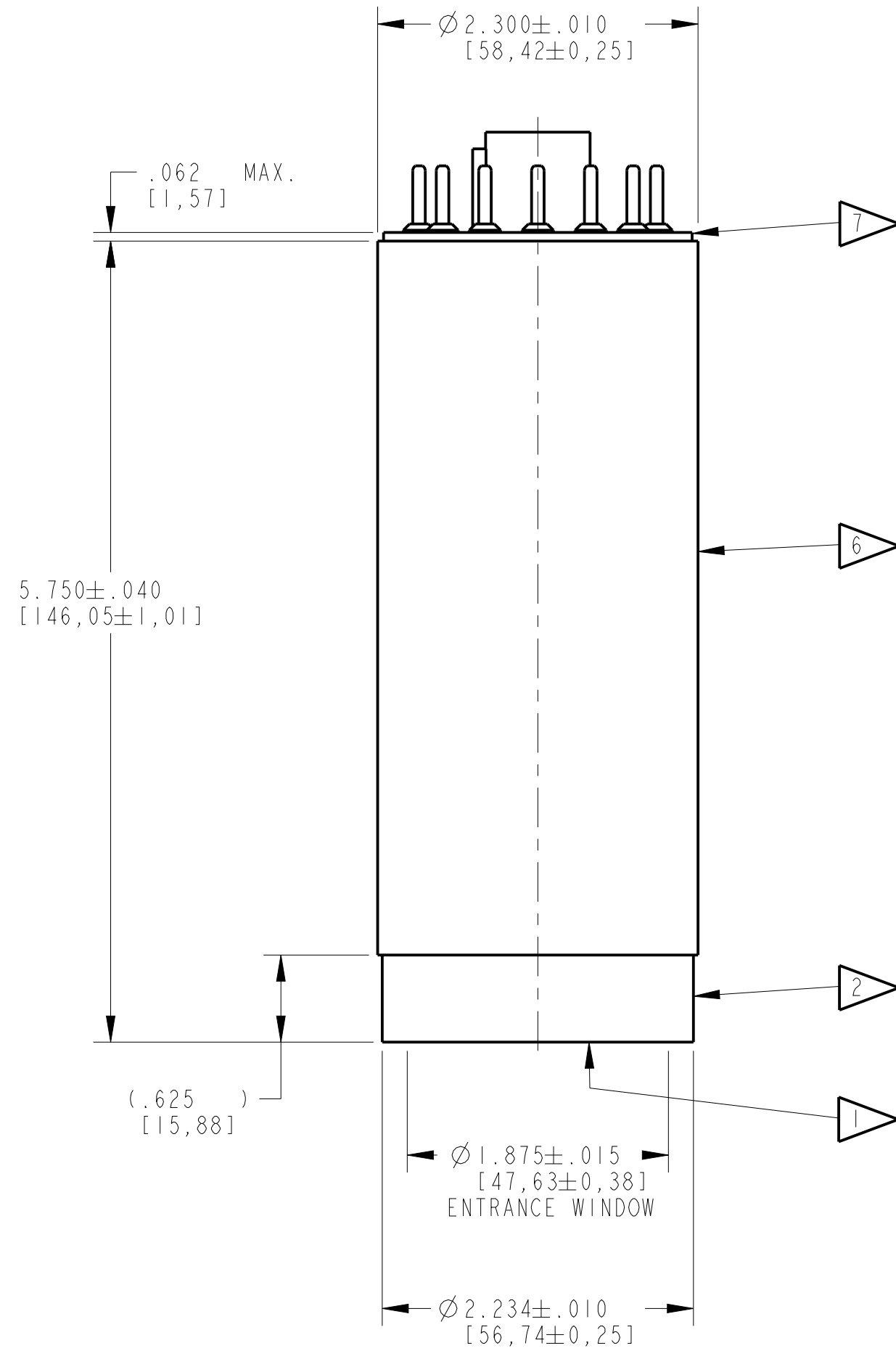
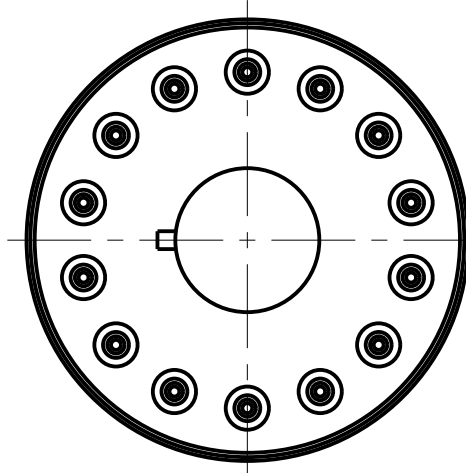
2

1

NOTES:

- 1 ALUMINUM ENTRANCE WINDOW  
.001 [0,0254] THK.  
(BARE METAL FINISH)
- 2 ALUMINUM CRYSTAL HOUSING  
.020 [0,508] THK.  
(CLEAR ALODINE FINISH)
- 3. NAI(TL) CRYSTAL  
Ø2.000 [50,8] X .040 [1,016] THK.
- 4. K+ GLASS OPTICAL WINDOW  
Ø2.000 [50,8] X .500 [12,7] THK.
- 5. Ø2.000 [50,8] PHOTOMULTIPLIER TUBE  
ADIT B51D01L OR EQUIV. WIRED FOR  
POSITIVE HIGH VOLTAGE OPERATION
- 6 MU-METAL LIGHT SHIELD  
.020 [0,508] THK.  
(BARE METAL FINISH)
- 7 14 PIN BASE
- 8. PERFORMANCE SPECIFICATION:  
PHR: 55% OR BETTER FOR Fe-55 END-ON  
HIGH VOLTAGE: +1000V TYPICAL
- 9. IN [MM]

REVISIONS				
ZONE	REV.	DESCRIPTION	DATE	APPROVED
D4 C4	A	CLEAR ALODINE WAS BRIGHT CHROME BARE METAL WAS BRIGHT CHROME	1/29/15	IND. #2679



**CUSTOMER APPROVAL**

APPROVED

APPROVED AS NOTED

REVISED & RESUBMIT

CUST. INIT. \_\_\_\_\_

DATE \_\_\_\_\_

**ENGINEERING SALES DRAWING**

DO NOT SCALE THIS DRAWING  
THIS DWG IS IN ACCORDANCE  
WITH ASME1 Y-14.5M

DRAWN L. MARKS 29-Oct-09

THIS DOCUMENT IS APPROVED  
AND MAINTAINED UNDER  
ELECTRONIC CONFIGURATION  
CONTROL

**SAINT-GOBAIN**  
17900 Great Lakes Parkway, Hiram, OH 44234

TITLE MODEL: 2XM.040/2A

SIZE <b>C</b>	CAGE CODE	DWG. NO. SA-10641	REV. A
------------------	-----------	----------------------	-----------

THIS PRINT IS THE EXCLUSIVE AND CONFIDENTIAL PROPERTY OF SAINT-GOBAIN CRYSTALS, A SUBSIDIARY OF SAINT-GOBAIN CERAMICS & PLASTICS, INC. AND IS NOT TO BE FURTHER REPRODUCED OR DISCLOSED TO ANOTHER PARTY WITHOUT PRIOR WRITTEN PERMISSION FROM SAINT-GOBAIN CRYSTALS. COPYRIGHT RESERVED, SAINT-GOBAIN CERAMICS & PLASTICS, INC. 2015

SCALE 1.000	WEIGHT	CALC. <input type="checkbox"/>	ACT. <input type="checkbox"/>	SHEET 1 OF 1
----------------	--------	--------------------------------	-------------------------------	-----------------

4

3

2

1

DWG. NO. SA-10641  
SHEET 1  
REV. A