

4

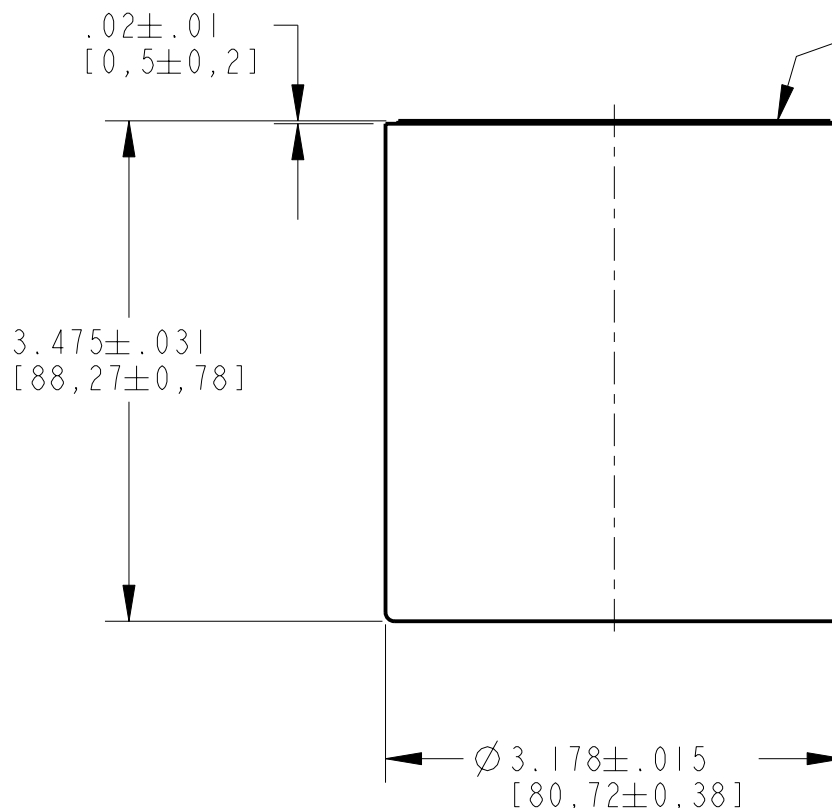
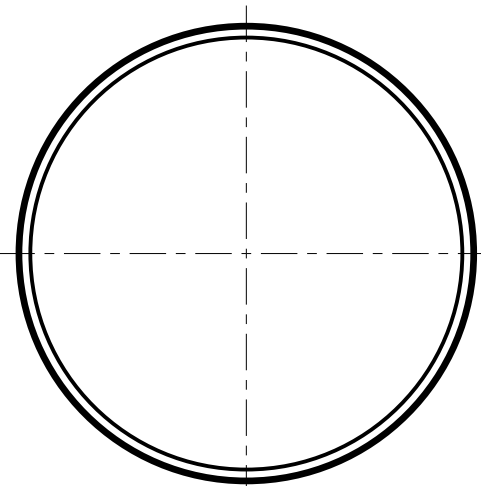
3

2

NOTES: UNLESS OTHERWISE SPECIFIED

REVISIONS				
ZONE	REV.	DESCRIPTION	DATE	APPROVED
-	-	-	-	-

- 1. ALUMINUM CRYSTAL HOUSING  
.020 [0,508] THK.  
(BRIGHT CHROME FINISH)
- 2. NAI(TL) CRYSTAL  
Ø3.000 [76,2] X 3.000 [76,2] THK.
- 3. K+ GLASS OPTICAL WINDOW  
.250 [6,35] THK.
- 4. PERFORMANCE SPECIFICATION:  
PHR: 8.5% OR BETTER FOR Cs-137



CUSTOMER APPROVAL

APPROVED

APPROVED AS NOTED

REVISED & RESUBMIT

CUST. INIT. \_\_\_\_\_

DATE \_\_\_\_\_

**ENGINEERING SALES DRAWING**

DO NOT SCALE THIS DRAWING  
THIS DWG IS IN ACCORDANCE WITH ASME Y-14.5M

DRAWN L. SCHULTZ 11-Mar-03

THIS DOCUMENT IS APPROVED AND MAINTAINED UNDER ELECTRONIC CONFIGURATION CONTROL

**SAINT-GOBAIN**  
CRYSTALS & DETECTORS  
12345 Kinsman Rd. Newbury, OH 44065

TITLE MODEL: 3R3

SIZE	CAGE CODE	DWG. NO.	REV.
B		SA-12825	-
SCALE	WEIGHT	CALC.	ACT. SHEET
0.750		<input type="checkbox"/>	<input type="checkbox"/> 1 OF 1

**THIS PRINT IS THE EXCLUSIVE PROPERTY OF SAINT-GOBAIN CRYSTALS & DETECTORS, A SUBSIDIARY OF SAINT-GOBAIN CERAMICS & PLASTICS, INC. AND IS NOT TO BE FURTHER REPRODUCED OR DISCLOSED TO ANOTHER PARTY WITHOUT PRIOR WRITTEN PERMISSION FROM SAINT-GOBAIN CRYSTALS & DETECTORS. COPYRIGHT RESERVED, SAINT-GOBAIN CERAMICS & PLASTICS, INC. 2003**

4

3

2

1