

THIS PRINT IS THE EXCLUSIVE PROPERTY OF SAINT-GOBAIN CRYSTALS & DETECTORS, A SUBSIDIARY OF SAINT-GOBAIN CERAMICS & PLASTICS, INC. AND IS NOT TO BE FURTHER REPRODUCED OR DISCLOSED TO ANOTHER PARTY WITHOUT PRIOR WRITTEN PERMISSION FROM SAINT-GOBAIN CRYSTALS & DETECTORS. COPYRIGHT RESERVED, SAINT-GOBAIN CERAMICS & PLASTICS, INC. 2003

REVISIONS

REV.	DESCRIPTION	DATE	APPROVED
A	(.02) WAS .032 MAX. 1.457 ±.031 WAS 1.468 ±.015 REVISED, UPDATED AND REDRAWN	10/7/03	IND. #709

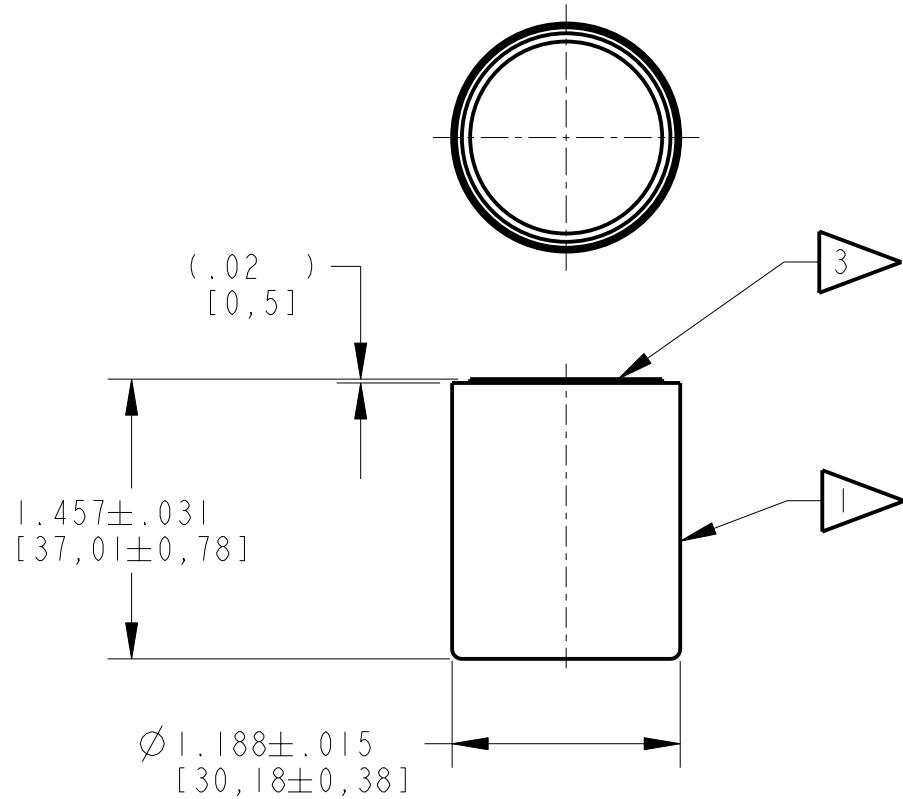
NOTES: UNLESS OTHERWISE SPECIFIED

1. ALUMINUM CRYSTAL HOUSING
.020 [0,508] THK.
(BRIGHT CHROME FINISH)

2. NA1(TL) CRYSTAL
Ø1.000 [25,4] X 1.000 [25,4] THK.

3. K+ GLASS OPTICAL WINDOW
.250 [6,35] THK.

4. PERFORMANCE SPECIFICATION:
PHR: 8.5% OR BETTER FOR Cs-137



CUSTOMER APPROVAL

APPROVED

APPROVED AS NOTED

REVISED & RESUBMIT

CUST. INIT. _____

DATE _____

ENGINEERING SALES DRAWING

DO NOT SCALE THIS DRAWING
THIS DWG IS IN ACCORDANCE WITH ASME Y-14.5M

DRAWN T. PARKER 04-FEB-87

THIS DOCUMENT IS APPROVED AND MAINTAINED UNDER ELECTRONIC CONFIGURATION CONTROL

SAINT-GOBAIN CRYSTALS & DETECTORS
12345 Kinsman Rd. Newbury, OH 44065

TITLE MODEL: IRI

SIZE A	CAGE CODE	DWG. NO. SA-13600	REV. A
SCALE 1.000	WEIGHT	CALC. <input type="checkbox"/>	ACT. <input type="checkbox"/>
		SHEET 1 OF 1	